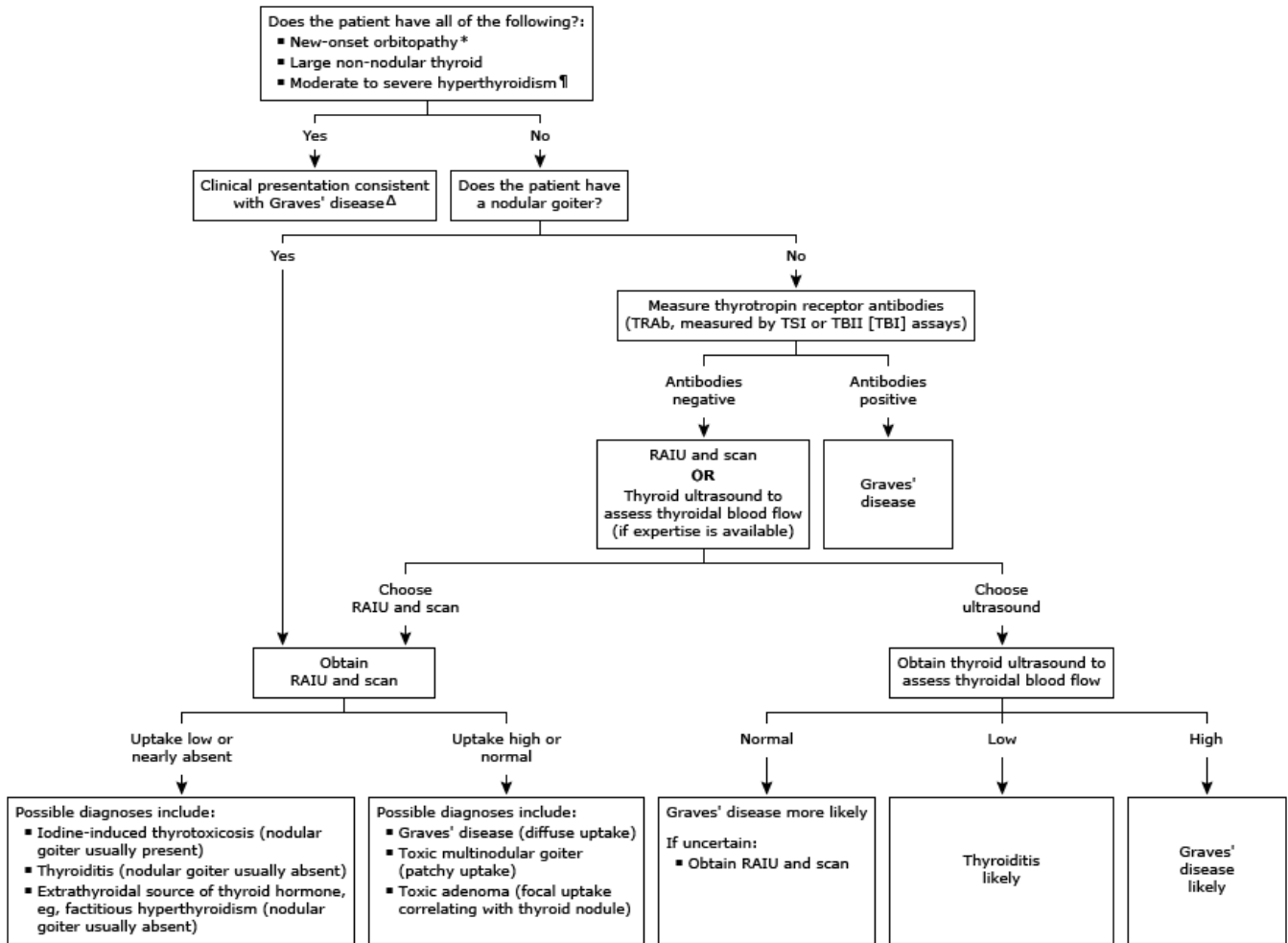


Determining the etiology of overt hyperthyroidism in nonpregnant, non-breastfeeding adults



Overt hyperthyroidism in nonpregnant, non-breastfeeding adults is defined by a low serum TSH with high free T4 and/or T3 (free or total T3) concentrations.

TRAb: thyrotropin receptor antibodies; TSI: thyroid-stimulating immunoglobulins; TBI/TBII: thyrotropin receptor-binding inhibitory immunoglobulin; RAIU: radioactive iodine uptake; TSH: thyroid-stimulating hormone; T4: thyroxine; T3: triiodothyronine.

* The presence of orbitopathy (ophthalmopathy) alone may be sufficient to diagnose Graves' disease.

¶ There is no formal definition of moderate to severe hyperthyroidism. A total T3 >300 ng/dL and/or free T4 >3 ng/dL suggests moderate to severe disease.

Δ We obtain a baseline TSI after diagnosis of Graves' disease to guide therapy with thionamides.